



1329 NORVELL STREET

EL CERRITO

PROPERTY SQ FT INFORMATION

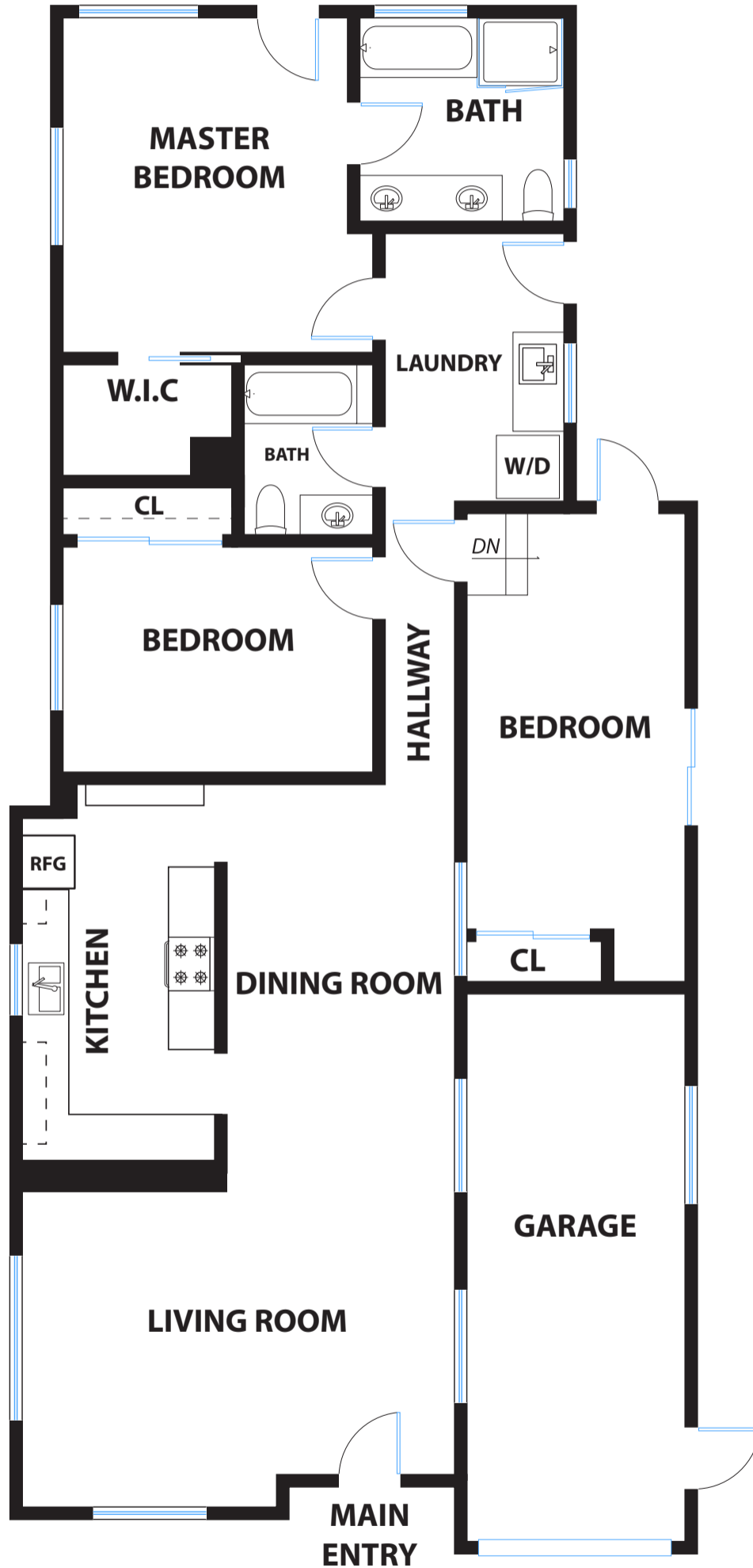
LIVING SPACE: 1476 SQ FT

* Main House: 1476 Sq Ft

NON-LIVING SPACE: 236 SQ FT

* Garage: 236 Sq Ft

COMBINED: 1712 Sq Ft



PRESENTED BY : THE LEAPER TEAM

DISCLAIMER: RENDERING BY OPEN HOMES PHOTOGRAPHY. ALL MEASUREMENTS ARE APPROXIMATE AND MAY NOT BE EXACT. DO NOT RELY ON THE ACCURACY OF THIS FLOOR PLAN WHEN DETERMINING THE PRICE OF A PROPERTY OR MAKING DECISIONS REGARDING BUYING OR SELLING OF PROPERTIES WITHOUT INDEPENDENT VERIFICATION.